

# Overview: Using a Mackie Control Universal with ACID and Vegas

The Mackie Control is fully supported by Vegas® (versions 5, 6, and 7) and ACID® (version 6) software and lends a tactile element to your editing sessions. An overlay is available from Mackie that you can use to label the Mackie Control buttons and controls with their mapped functions in Vegas. Many, though not all, of those functions are also available in ACID. For more information about Mackie Control overlays, please check the Mackie Web site: <http://www.mackie.com/products/mcu/index.html>



The overlay identifies the default control mapping. You can also customize the buttons and controls on the Mackie control. For more information, see [Configuring or customizing control mappings](#) on page 4. When you use the default mapping, the Mackie Control is divided into several functional areas. All functionality described in this document refers to the default control mapping.

## Hardware setup

You can use one Mackie Control Universal (with up to four Mackie Control Extenders) with Vegas and ACID. Perform the following steps for each device.

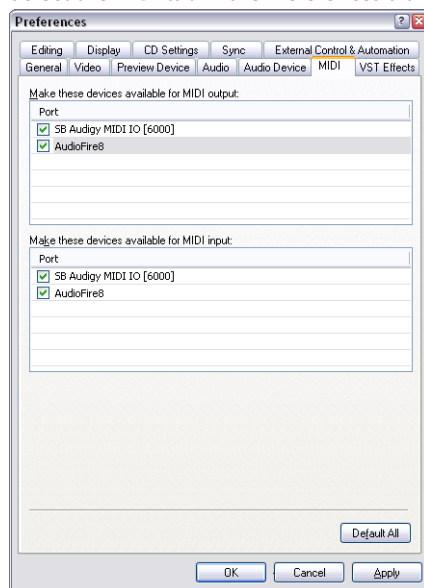
If you're using Mackie Control Extenders, you'll need a multiport MIDI interface with MIDI In/Out ports for each device.

### Connecting the Mackie Control Universal

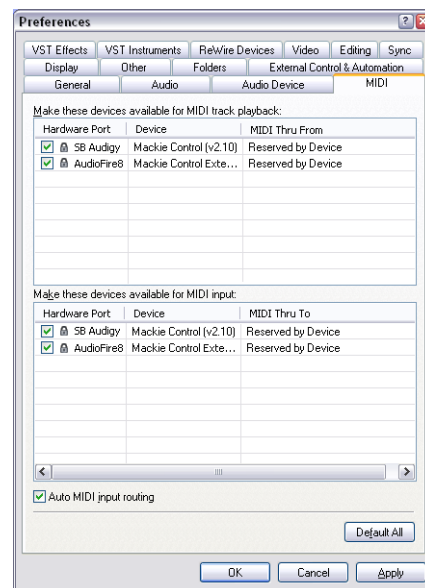
1. Connect the MIDI Out port on your MIDI interface to the MIDI In port on your Mackie Control Universal.
2. Connect the MIDI In port on your MIDI interface to the MIDI Out port on your Mackie Control Universal.
3. Repeat Steps 1 and 2 for each Mackie Control Extender.

### Configuring the software to use the Mackie Control Universal

1. From the Options menu, choose **Preferences** to display the Preferences dialog.
2. Enable your MIDI input and output ports:
  - a. Select the MIDI tab in the Preferences dialog.



Vegas



ACID

- b. In the **Make these devices available for MIDI output** (Vegas) or **Make these devices available for MIDI track playback** (ACID) box, select the check box for the MIDI port that is connected to the Mackie Control Universal's In port.
- c. In the **Make these devices available for MIDI input** box, select the check box for the MIDI port that is connected to your Mackie Control Universal's Out port.
- d. Repeat Steps 2b and 2c for each Mackie Control Extender.
- e. Click **Apply**.

**Note:** In ACID, MIDI ports that are in use by a Mackie Control or Extender display a  icon to indicate that they are not available for MIDI track input or playback.

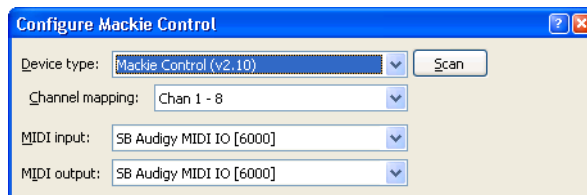
3. Choose your control surface:
  - a. Select the External Control and Automation tab in the Preferences dialog.
  - b. From the **Available devices** drop-down list, choose **Mackie Control** and click the **Add** button to load the default profile.
4. Click **OK** to apply your changes and close the Preferences dialog.
5. From the Options menu, choose **External Control** to enable the Mackie Control Universal.

## Configuring channel mappings for Mackie Control Extenders

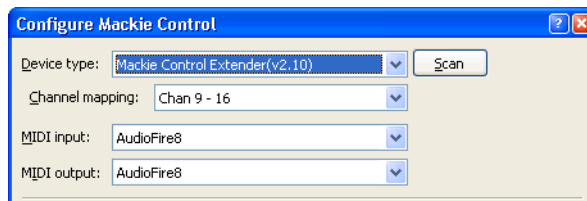
If you're using Mackie Control Extenders, you'll need to set up your channel mapping. Channel mapping tells the software how the devices are arranged on your desktop.

For example, if your Mackie Control Universal is on the left of your Mackie Control Extender, you could configure the Mackie Control to adjust channels 1 through 8 and use the Mackie Control Extender to adjust channels 9 through 16. If you have a Mackie Control Universal positioned between two Mackie Control Extenders, you could adjust channels 1 through 8 on the left Extender, adjust channels 9 through 16 on the Mackie Control Universal, and adjust channels 17 through 24 on the right Extender.

1. From the Options menu, choose **Preferences** to display the Preferences dialog.
2. Select the External Control & Automation tab.
3. Double-click your Mackie Control in the **Active control devices** list to display the Configure Mackie Control dialog. The current channel mapping is displayed on each device's LCD.
4. Choose the channels you want to control with the Mackie Control Universal:
  - a. From the **Device Type** drop-down list, choose **Mackie Control**.
  - b. From the **Channel Mapping** drop-down list, choose the channels you want to adjust with the Mackie Control Universal.



5. Choose the channels you want to control with the Mackie Control Extender:
  - a. From the **Device Type** drop-down list, choose **Mackie Control Extender**.
  - b. From the **Channel Mapping** drop-down list, choose the channels you want to adjust with the Mackie Control Extender.



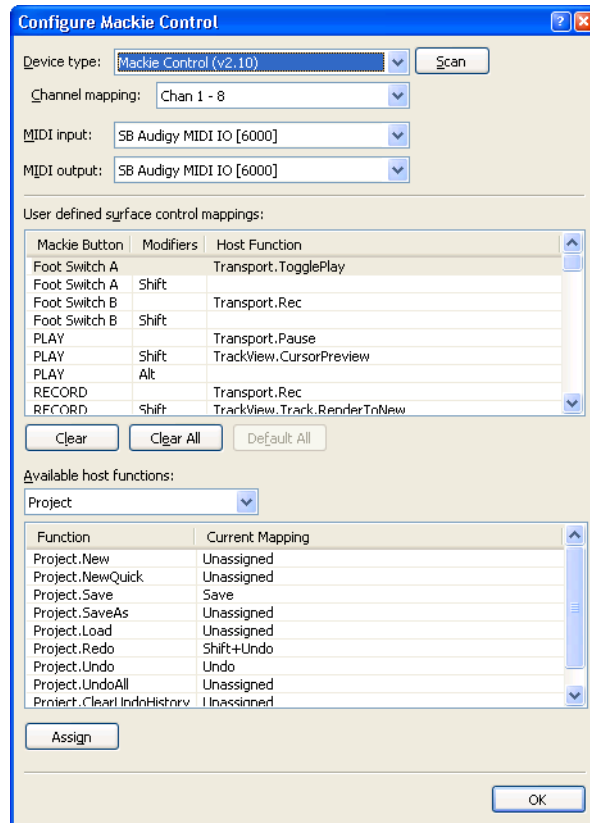
6. Repeat Step 5 for each Mackie Control Extender.
7. Click **OK** to apply your changes and close the Configure Mackie Control dialog.
8. Click **OK** to apply your changes and close the Preferences dialog.

## Configuring or customizing control mappings

Use the External Control & Automation tab in the Preferences dialog to select the control surfaces you want to use and adjust their configuration.

**Reminder:** When you customize your control mappings, button functions may not match the labels on the overlay. You can click the **Default All** button in the Configure Mackie Control dialog to restore the default settings.

1. From the Options menu, choose **Preferences** to display the Preferences dialog.
2. Select the External Control & Automation tab.
3. Double-click your Mackie Control in the **Active control devices** list to display the Configure Mackie Control dialog.



4. To add or change a function do the following:
  - a. Select an item in the **User defined surface control mappings** list.
  - b. Select an item in the **Available host functions** list.
  - c. Click the **Assign** button.
5. To remove a function, select an item in the **User defined surface control mappings** list and click the **Clear** button.
6. To remove all functions, click the **Clear All** button.
7. To replace all custom functions with the default settings, click the **Default All** button.

## Using the Mackie Control Universal with Vegas

The following sections describe the default control mapping for the Mackie Control Universal when used with Vegas.

*The Mackie Control Universal can control either trim or automation settings. In order to control automation settings, the Automation button in the Audio/Video section must be selected, and the track or bus you want to edit must be set to Automation Write (Touch) or Automation Write (Latch). Hold the F1 button while turning the V-Pot (or use the Automation Settings button) to change the automation recording mode for each track and bus track.*

### Channel section

The channel section includes V-Pots (knobs), buttons, and faders that you can use to edit your tracks and busses.

If you're using Mackie Control Extender units, you can control eight additional channels with each Extender. *For more information, see [Configuring channel mappings for Mackie Control Extenders](#) on page 3.*



Item	Description
1 V-Pot	<p>Adjusts values for panning, volume (when <b>Flip</b> button is selected), video track opacity (when <b>Flip</b> button is selected), video track fade-to-color, and effect parameter values.</p> <ul style="list-style-type: none"><li>• <b>Audio track volume:</b> Adjusts track volume when the <b>Pan</b> or <b>Sends</b> button is selected and the <b>Flip</b> button is selected.</li><li>• <b>Audio track panning:</b> Adjusts audio track panning when the <b>Pan</b> button is selected.</li><li>• <b>Bus send levels:</b> Adjusts bus send levels when the <b>Sends</b> button is selected.</li><li>• <b>Video track opacity:</b> Adjusts video track opacity when the <b>Video</b> and <b>Flip</b> buttons are selected.</li><li>• <b>Video track fade to color:</b> Adjusts video track fade-to-color envelope when the <b>Video</b> button is selected, the <b>Automation</b> button in the Audio/Video section is selected, and the track is in Automation Write (Touch) or Automation Write (Latch) mode.</li><li>• <b>Compositing mode:</b> Adjusts the track compositing mode when the <b>Video</b> button is selected and you press the <b>Output/Compositing</b> button twice to change the track assignment to CO.</li><li>• <b>Effect parameters:</b> Adjusts effect parameters when the <b>Inserts</b> button is selected.</li></ul> <p>The V-Pot is velocity sensitive, so rotating quickly changes values quickly, and you can press the button to choose a selection.</p> <p>When the <b>Pan</b> or <b>Sends</b> button is selected, press the V-Pot to edit the track or bus chain.</p>
2 Rec/Ready Button	Arms audio tracks for recording.
3 Signal LED	Indicates whether an audio track or bus is outputting a signal.
4 Solo Button	Press to solo a track or remove it from the solo group.
5 Mute Button	Press to mute or unmute a track.

Item	Description
6 Select Button	Press to select a track.
7 Fader	<p>Adjusts the track or bus level (unless the <b>Flip</b> button is selected).</p> <p>When the <b>Automation</b> button is selected, the fader adjusts the automation envelope if the track is in Automation Write (Touch) or Automation Write (Latch) mode.</p> <p>The fader can also adjust settings for the following items when you select other buttons in the Channel section.</p> <ul style="list-style-type: none"> <li>• <b>Audio track panning:</b> Adjusts audio track panning when the <b>Pan</b> and <b>Flip</b> buttons are selected.</li> <li>• <b>Bus send levels:</b> Adjusts bus send levels when the <b>Sends</b> and <b>Flip</b> buttons are selected.</li> <li>• <b>Video track opacity:</b> Adjusts video track opacity when the <b>Video</b> button is selected.</li> <li>• <b>Video track fade to color:</b> Adjusts video track fade-to-color settings when the <b>Automation</b>, <b>Video</b>, and <b>Pan/Fade to Color</b> buttons are selected.</li> </ul> <p>Adjusts video track fade-to-color envelope when the following conditions are met:</p> <ul style="list-style-type: none"> <li>—The <b>Video</b> button is selected.</li> <li>—The <b>Automation</b> button in the Audio/Video section is selected</li> <li>—The <b>Pan/Fade to Color</b> button is selected.</li> <li>—The track is in Automation Write (Touch) or Automation Write (Latch) mode.</li> </ul> <p>The fader is touch sensitive, so if you're recording automation parameters, recording will begin when you touch the fader and stop when you release it. The current setting is displayed in the Mackie Control display.</p>

### Footswitches (not shown)

The Mackie Control has two switched inputs (labeled User Switch A and User Switch B) that you can use to connect footswitches.

By default, footswitch A toggles playback, and footswitch B starts and stops recording.

You can customize the footswitches in the Configure Mackie Control dialog. Double-click Mackie Control in the **Active control devices** list on the External Control & Automation tab of the Preferences dialog to display the Configure Mackie Control dialog. *For more information, see [Configuring or customizing control mappings](#) on page 4.*

## Control buttons

The buttons in the Control section determine the operation of the V-Pots and faders in the channel section of your Mackie Control. In every mode, the fader adjusts track volume, and the V-Pot adjusts the selected control mode. You can press the **Flip** button to reverse the V-Pot and fader function.



Item	Description
1 Output/Compositing	Press the <b>Output</b> button to set the output device for each track or bus. Turn the V-Pot in the channel section to choose an output device and press the V-Pot to select it. When the <b>Video</b> button is selected, you can set the compositing mode for each track using the V-Pot.
2 Input/Motion Blur	Press to set the recording input device for each track. Turn the V-Pot in the channel section to choose an input device and press the V-Pot to select it. When the <b>Video</b> button is selected, press the V-Pot to enable or bypass motion blur for each video track.
3 Pan/Fade to Color	Press to adjust track panning using the V-Pot in the channel section. In 5.1 surround projects, pressing the <b>Pan</b> button toggles left-to-right panning, front-to-rear panning, and center-channel level adjustment using the V-Pot. When the <b>Video</b> button is selected, you can adjust the opacity of video tracks with the fader in the channel section and adjust fade-to-color settings with the V-Pot when the <b>Automation</b> button in the Audio/Video section is selected and the track is in <b>Automation Write (Touch)</b> or <b>Automation Write (Latch)</b> mode.
4 Sends	Press to adjust bus and assignable effects send levels. Press the <b>Sends</b> button to scroll through the available busses and assignable effects chains, and then turn the V-Pot to adjust the send level.

**Item**                      **Description**

5 Inserts                      Press to adjust effects settings.

Press the button once to display **PL** in the Mackie Control Assignment display. The Mackie Control LCD displays the effects that are assigned to each track or bus. The following example shows a three-track project:

Aud1	Aud2	Aud3	Master
TrNsGt	TrcCmp	TrcEQ	(None)

Turn the V-Pot to scroll through the effects, and press the V-Pot to edit the current effect. In editing mode, **PE** is displayed in the Assignment display. The following example shows the settings for the Noise Gate plug-in on track one:

ThrLvl	AttTim	RlsTim	Bypass	Aud1	Track	Noise Gate
-80.0	2.90	100.0	False	1/1	*	Noise gate 1

PE mode uses the following controls:

- **V-Pots 1-4:** Turn to edit the effect's parameters. For "switch" parameters such as Bypass, press the V-Pot to change the setting.
- **V-Pot 5:** Turn to scroll through an effect's property pages.
- **V-Pot 6:** Turn to choose from a plug-in's available presets. Press the V-Pot to choose a preset.
- **V-Pot 7:** Turn to edit the current effect for a different channel.
- **V-Pot 8:** Turn to choose other effects for the current channel.

Press the **Inserts** button again to view effects chains. **PS** is displayed in the Assignment display. The following example shows the effects chain on track one:

TrackNoiseGate	Track EQ	TrackCmprs	Aud1
			1 1/2

PS mode uses the following controls:

- **V-Pots 1, 3, and 5:** Turn to choose other effects for the current channel. Press to edit the selected effect and enter PE mode.
- **V-Pots 2, 4, and 6:** After choosing an effect with V-Pot 1, 3, or 5, press V-Pot 2, 4, or 6 to add it to the channel.
- **V-Pot 7:** If a channel has multiple pages of effects in the chain, turn to display additional effects. In the previous example, **Aud 1 1/2** means that track one has two pages of effects.
- **V-Pot 8:** Turn to choose effects chains for other channels.

When **<No Insert>** is displayed above a V-Pot, you can turn the V-Pot to view effects that you can add to the chain. New effects are displayed with a \*. Press the next V-Pot (to the right) to add the effect.

6 Settings                      Press to adjust track or bus settings using the F1 through F6 buttons.

- **F1:** Hold the button and turn the V-Pot to change the automation recording mode for each track and bus track.
- **F2:** Hold the button and turn the V-Pot to change the current panning mode.
- **F3:** Hold the button and press the V-Pot to change the track phase.
- **F4:** Hold the button and turn the V-Pot to change record input monitoring settings when you're using an ASIO audio device.
- **F5:** When the **Pan** button is selected, press the **Settings** button and then hold F5 while pressing the V-Pot to change the bus or assignable effects output fader to Pre FX or Post FX.

When the **Sends** button is selected, press the **Settings** button and hold F5 while pressing the V-Pot to change a track's bus or assignable effects send level to Pre Volume or Post Volume. Press the **Sends** button to scroll through the available bus and effects sends.

- **F6:** Press the **Settings** button and hold F6 while pressing the V-Pot on a channel to return the channel's settings to the track defaults.

## Fader Banks buttons

The Fader Banks buttons control the behavior of the channel section controls.



Item	Description
1 Bank	Press the left or right arrow button to scroll the channels 8 units at a time. For example, if tracks 1-8 are currently displayed, pressing the right arrow will change to tracks 9-16.
2 Channel	Press the left or right arrow button to scroll the channels 1 unit at a time. For example, if tracks 1-8 are currently displayed, pressing the right arrow will change to tracks 2-9. Hold the <b>Option</b> button while pressing either <b>Channel</b> button to change track order. For example, if track two is selected and you press <b>Option+ &lt; Channel</b> , track two becomes track one. Conversely, if track one is selected and you press <b>Option + Channel &gt;</b> , track one becomes track two.
3 Flip	Press to exchange the behavior of the fader and V-Pot when allowed.
4 Video	Press to toggle audio and video modes. For example, you press the <b>Pan/Fade</b> button in audio mode, you can perform audio track panning with the V-Pot. If you press the button in video mode, you can adjust fade-to-color settings if the <b>Automation</b> button in the Audio/Video section is selected and the track is in <b>Automation Write (Touch)</b> or <b>Automation Write (Latch)</b> mode.

## Display buttons

The Display buttons control the behavior of the channel section controls.



Item	Description
1 Meters/ Values	When you're working with audio tracks or busses, press to display meters or numeric values. Even in Meters mode, numeric values are displayed when you edit a value. In Audio mode, hold the <b>Shift</b> button in the Modifiers section while pressing the <b>Meters/Values</b> button to toggle control of tracks, busses, or tracks and busses. <ul style="list-style-type: none"> <li>• Press once to show audio tracks.</li> <li>• Press again to show audio tracks.</li> <li>• Press again to show busses.</li> <li>• Press again to show tracks and busses.</li> </ul>
2 Time Fmt Zero	Press and hold to display the current time format. Turn V-Pot 8 while holding the button to change the format. Hold the <b>Shift</b> button in the Modifiers section while pressing the <b>Time Fmt/Zero</b> button to set the current cursor position to zero.

## Markers buttons

The Markers buttons control additional track and channel settings.



Item	Description
1 Marker 1/9 Automation Mode	Press to place the cursor at marker 1, or hold Shift and press to place the cursor at marker 9. When the <b>Settings</b> button is selected, hold the button and turn the V-Pot to change the automation recording mode for each track and bus track.
2 Marker 2/10 Pan Mode	Press to place the cursor at marker 2, or hold Shift and press to place the cursor at marker 10. When the <b>Settings</b> button is selected, hold the button and turn the V-Pot to change the current panning mode.
3 Marker 3/11 Track Phase	Press to place the cursor at marker 3, or hold Shift and press to place the cursor at marker 11. When the <b>Settings</b> button is selected, hold the button and press the V-Pot to change the track phase.
4 Marker 4/12 Input Monitor	Press to place the cursor at marker 4, or hold Shift and press to place the cursor at marker 12. When the <b>Settings</b> button is selected, hold the button and turn the V-Pot to change record input monitoring settings when you're using an ASIO audio device.
5 Marker 5/13 Pre/Post	Press to place the cursor at marker 5, or hold Shift and press to place the cursor at marker 13. When the <b>Pan</b> button is selected, press the <b>Settings</b> button and then hold F5 while pressing the V-Pot to change the bus or assignable effects output fader to Pre FX or Post FX.  When the <b>Sends</b> button is selected, press the <b>Settings</b> button and hold F5 while pressing the V-Pot to change a track's bus or assignable effects send level to Pre Volume or Post Volume. Press the <b>Sends</b> button to scroll through the available bus and effects sends.
6 Marker 6/14 Default	Press to place the cursor at marker 6, or hold Shift and press to place the cursor at marker 14. Press the <b>Settings</b> button and hold F6 while pressing the V-Pot on a channel to return the channel's settings to the track defaults.
7 Marker 7/15	Press to place the cursor at marker 7, or hold Shift and press to place the cursor at marker 15.
8 Marker 8/16	Press to place the cursor at marker 8, or hold Shift and press to place the cursor at marker 16.

## Add New buttons

The Add New buttons add busses or tracks to your project.



Item	Description
1 Track	Press to add a new audio track. When the <b>Video</b> button is selected, a new video track is added.
2 Bus	Press to add an audio bus to your project.

## Windows buttons

The Windows buttons control the display of various Vegas windows.



Item	Description
1 Mixer	Press to show the Mixer window. If the window is not docked, pressing the button shows/hides the window.
2 Video Preview	Press to show the Video Preview window. If the window is not docked, pressing the button shows/hides the window.
3 Plug-Ins	Press to show the Plug-In Manager window. If the window is not docked, pressing the button shows/hides the window.

## View buttons

The View buttons control the display of various sections of the Vegas window.



Item	Description
1 Bus Tracks	Press to show or hide audio bus tracks in the Vegas timeline. When the <b>Video</b> button is selected, press to show or hide the video bus track.
2 Dock Area	Press to show or hide the Window Docking Area at the bottom of the Vegas window.
3 Track List	Press to show or hide the track list in the timeline.

## Modifiers buttons

The Modifiers buttons extend the functionality of other buttons on the Mackie Control.



Item	Description
1 Shift	Hold the <b>Shift</b> button while pressing a button labeled with inverse text to perform the shift function. For example, hold <b>Shift</b> while pressing the Undo/Redo button to reverse an undo action.
2 Option/Track Order	Hold the <b>Option/Track Order</b> button while pressing a button in the Settings, Add New, or Windows group for alternative functions. Hold the <b>Option/Track Order</b> button while pressing a the <b>Channel &lt;</b> or <b>Channel &gt;</b> button to change track order. Hold the <b>Option/Track Order</b> button while pressing F1 to F16 to perform custom functions you can define. <i>For more information, see <a href="#">Configuring or customizing control mappings</a> on page 4.</i>
3 Ctrl	Hold the <b>Ctrl</b> button while using a control for alternative functions.
4 Alt	Hold the <b>Alt</b> button while using a control for alternative functions. Hold <b>Alt</b> while pressing F1 through F10 to run scripts 1-10 from the Tools > Scripting submenu.

## Audio/Video buttons

The Audio/Video buttons control various audio and video settings for your project.



Item	Description
1 Automation	Press to place the controls on the Mackie Control in automation mode. The controls in the channel section of the Mackie Control will affect the automation parameters on the track or bus if Automation Write (Touch) or Automation Write (Latch) mode is selected. When the button is not selected, the buttons control trim (static) values.
2 Bypass FX	Press to bypass/enable all audio effects.
3 Metronome	Press to turn the metronome on or off.
4 Surround/ Ext Monitor	Press to toggle the project properties between stereo and 5.1 surround mode. When the <b>Video</b> button is selected, press the <b>Surround/Ext Monitor</b> button to send your video preview to an external monitor.
5 Downmix/ Split Screen	Press to toggle the state of the <b>Downmix Output</b> button in the Mixer window. When the <b>Video</b> button is selected, press the <b>Downmix/Split Screen</b> button to toggle split-screen video previews.
6 Dim/ Overlays	Press to toggle the state of the <b>Dim Output</b> button in the Mixer window. When the <b>Video</b> button is selected, press the <b>Dim/Overlays</b> button to toggle the display of overlays (grid, safe areas, and RGB channels) in the Video Preview window.

## Project buttons

The Project buttons perform various project-level commands.



Item	Description
1 Save	Press to save your project.
2 Undo/Redo	Press to reverse edit operations. Hold <b>Shift</b> while pressing the button to reverse an undo operation.
3 OK	Not used.
4 Cancel	Not used.

## Timeline buttons

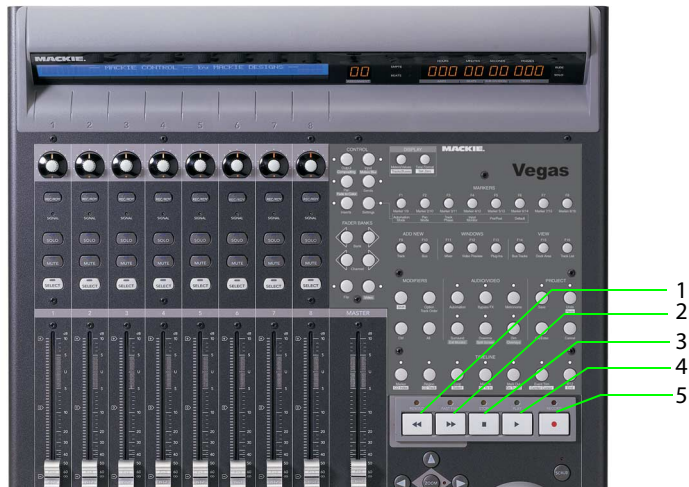
The Timeline buttons perform various commands for the project timeline.



Item	Description
1 Marker/ CD Index	<p>Press to place a marker at the cursor position.</p> <p>Hold the <b>Shift</b> button while pressing the <b>Marker/CD Index</b> button to place a CD index marker at the cursor position.</p> <p>Hold the <b>Ctrl</b> button while pressing the <b>Marker/CD Index</b> button to remove a marker.</p> <p>Hold the <b>Ctrl</b> and <b>Shift</b> buttons while pressing the <b>Marker/CD Index</b> button to remove a CD index marker.</p>
2 Region/ CD Track	<p>Press to convert the current selection to a region.</p> <p>Hold the <b>Shift</b> button while pressing the <b>Region/CD Track</b> button to convert the current selection to a CD track region.</p> <p>Hold the <b>Ctrl</b> button while pressing the <b>Region/CD Track</b> button to remove a region.</p> <p>Hold the <b>Ctrl</b> and <b>Shift</b> buttons while pressing the <b>Region/CD Track</b> button to remove a CD track.</p>
3 Loop/ Select	<p>Press to toggle looped playback mode.</p> <p>Hold the <b>Shift</b> button while pressing the <b>Loop/Select</b> button to create a time selection from the loop region.</p>
4 Mark In/ Go to In	<p>Press to set the beginning of the loop region at the cursor position.</p> <p>Hold the <b>Shift</b> button while pressing the <b>Mark In/Go to In</b> button to move the cursor to the beginning of the loop region.</p>
5 Mark Out/ Go to Out	<p>Press to set the end of the loop region at the cursor position.</p> <p>Hold the <b>Shift</b> button while pressing the <b>Mark Out/Go to Out</b> button to move the cursor to the end of the loop region.</p>
6 Event Trim/ Center Cursor	<p>Press to toggle event edge-trimming mode. Press the right or left arrow button to select the next or previous event edge, and then turn the jog dial to trim the event edge.</p> <p>Hold the <b>Shift</b> button while pressing the <b>Event Trim/Center Cursor</b> button to center the cursor in the timeline view.</p>
7 RTZ/ End	<p>Press to move the cursor to the beginning of the project.</p> <p>Hold the <b>Shift</b> button while pressing the <b>RTZ/End</b> button to move the cursor to the end of the project.</p>

## Transport buttons

The Transport buttons allow you to navigate the timeline and preview your project.



Item	Description
1 Rewind	Press and hold to move backward through the timeline at 20x speed.
2 Fast Forward	Press and hold to move forward through the timeline at 20x speed.
3 Stop	Press to stop playback and return the cursor to its position before playback started. Hold the <b>Shift</b> button while pressing the <b>Stop</b> button to create a dynamic RAM preview.
4 Play	Press to start playback. Press again to stop playback and leave the cursor at its current position. Hold the <b>Shift</b> button while pressing the <b>Play</b> button to preview the cursor position. To change the playback duration, use the <b>Cursor preview duration</b> control on the Editing tab of the Preferences dialog.
5 Record	Press to start recording. Press again to stop recording and leave the cursor at its current position. Hold the <b>Shift</b> button while pressing the <b>Record</b> button to render the current selection to a new track.

## Arrow buttons

The arrow buttons allow you to navigate the timeline and preview your project.



Item	Description
1 Left/Right	<p>When the <b>Zoom</b> button is not selected:</p> <ul style="list-style-type: none"><li>• Press the left or right arrow button to move left or right in small increments.</li><li>• Hold <b>Ctrl</b> while pressing the left or right arrow button to move to the previous or next marker.</li><li>• Hold <b>Ctrl + Shift</b> while pressing the left or right arrow button to select to the previous or next marker.</li></ul> <p>When the <b>Zoom</b> button is selected:</p> <ul style="list-style-type: none"><li>• Hold <b>Shift</b> while pressing the left or right arrow button to select left or right by pixels.</li><li>• Hold <b>Ctrl</b> while pressing the left or right arrow button to move to the previous or next marker.</li><li>• Hold <b>Ctrl + Shift</b> while pressing the left or right arrow button to select to the previous or next marker.</li></ul>
2 Up/Down	<p>When the <b>Zoom</b> button is not selected:</p> <ul style="list-style-type: none"><li>• Press to zoom in or out.</li><li>• Hold <b>Shift</b> while pressing the up or down arrow button to change the magnification of audio waveforms.</li><li>• Hold <b>Ctrl + Shift</b> while pressing the up or down button to change track heights.</li></ul> <p>When the <b>Zoom</b> button is selected:</p> <ul style="list-style-type: none"><li>• Press to zoom in or out.</li><li>• Hold <b>Shift</b> while pressing the up or down button to change the magnification of audio waveforms.</li><li>• Hold <b>Ctrl</b> while pressing the up or down buttons to zoom to a selection or to the high in/max out.</li><li>• Hold <b>Ctrl+Shift</b> while pressing the up or down buttons to change track heights.</li></ul>

## Jog dial

The jog dial allows you to navigate the timeline when playback is stopped.



### Navigating the timeline

When playback is paused and the **Scrub** button is not selected, the jog dial performs the following functions:

- When the **Zoom** button is not selected, turn the dial clockwise or counterclockwise to navigate the timeline by frames.
- When the **Zoom** button is selected, turn the dial clockwise or counterclockwise to navigate the timeline by pixels.
- Hold the **Shift** button and turn the dial to create a time selection or extend a selection.

### Scrubbing the timeline

During playback, turning the jog dial increases or decreases the playback rate.

When playback is paused and the **Scrub** button is selected, turning the jog dial scrubs the timeline.

### Trimming events

1. Press the **Event Trim** button to enter event trimming mode.
2. Press the left or right arrow button to select the event edge you want to trim. A red bracket is displayed to indicate which event edge will be trimmed.



3. Turn the jog dial to trim the event edge left or right in one-frame increments. Hold **Ctrl** while turning the dial to trim in one-pixel increments. Depending on the current zoom level, the trim duration will vary.

## Using the Mackie Control Universal with ACID

The following sections describe the default control mapping for the Mackie Control Universal when used with ACID.

*The Mackie Control Universal can control either trim or automation settings. In order to control automation settings, the Automation button in the Audio/Video section must be selected, and the track or bus you want to edit must be set to Automation Write (Touch) or Automation Write (Latch). Hold the F1 button while turning the V-Pot (or use the Automation Settings button) to change the automation recording mode for each track and bus track.*

### Channel section

The channel section includes V-Pots (knobs), buttons, and faders that you can use to edit your tracks and busses.

If you're using Mackie Control Extender units, you can control eight additional channels with each Extender. *For more information, see [Configuring channel mappings for Mackie Control Extenders](#) on page 3.*



Item	Description
1 V-Pot	Adjusts values for panning, volume (when <b>Flip</b> button is selected), and effect parameter values. <ul style="list-style-type: none"><li>• <b>Audio track volume:</b> Adjusts track volume when the <b>Pan</b> or <b>Sends</b> button is selected and the <b>Flip</b> button is selected.</li><li>• <b>Audio track panning:</b> Adjusts audio track panning when the <b>Pan</b> button is selected.</li><li>• <b>Bus send levels:</b> Adjusts bus send levels when the <b>Sends</b> button is selected.</li><li>• <b>Effect parameters:</b> Adjusts effect parameters when the <b>Inserts</b> button is selected.</li></ul> The V-Pot is velocity sensitive, so rotating quickly changes values quickly, and you can press the button to choose a selection. When the <b>Pan</b> or <b>Sends</b> button is selected, press the V-Pot to edit the track or bus effects chain.
2 Rec/Ready Button	Arms audio tracks for recording.
3 Signal LED	Indicates whether an audio track or bus is outputting a signal.
4 Solo Button	Press to solo a track or remove it from the solo group.
5 Mute Button	Press to mute or unmute a track.
6 Select Button	Press to select a track.

Item	Description
7 Fader	<p>Adjusts the track or bus level (unless the <b>Flip</b> button is selected).</p> <p>When the <b>Automation</b> button is selected, the fader adjusts the automation envelope if the track is in Automation Write (Touch) or Automation Write (Latch) mode.</p> <p>The fader can also adjust settings for the following items when you select other buttons in the Channel section.</p> <ul style="list-style-type: none"> <li>• <b>Audio track panning:</b> Adjusts audio track panning when the <b>Pan</b> and <b>Flip</b> buttons are selected.</li> <li>• <b>Bus send levels:</b> Adjusts bus send levels when the <b>Sends</b> and <b>Flip</b> buttons are selected.</li> </ul> <p>The fader is touch sensitive, so if you're recording automation parameters, recording will begin when you touch the fader and stop when you release it. The current setting is displayed in the Mackie Control display.</p>

### Footswitches (not shown)

The Mackie Control has two switched inputs (labeled User Switch A and User Switch B) that you can use to connect footswitches.

By default, footswitch A toggles playback, and footswitch B starts and stops recording.

You can customize the footswitches in the Configure Mackie Control dialog. Double-click Mackie Control in the **Active control devices** list on the External Control & Automation tab of the Preferences dialog to display the Configure Mackie Control dialog. *For more information, see [Configuring or customizing control mappings](#) on page 4.*

## Control buttons

The buttons in the Control section determine the operation of the V-Pots and faders in the channel section of your Mackie Control. In every mode, the fader adjusts track volume, and the V-Pot adjusts the selected control mode. You can press the **Flip** button to reverse the V-Pot and fader function.



Item	Description
1 Output	Press the <b>Output</b> button to set the output device for each track or bus. Turn the V-Pot in the channel section to choose an output device and press the V-Pot to select it.
2 Input	Press to set the recording input device for each track. Turn the V-Pot in the channel section to choose an input device and press the V-Pot to select it.
3 Pan	Press to adjust track panning using the V-Pot in the channel section. In 5.1 surround projects, pressing the <b>Pan</b> button toggles left-to-right panning, front-to-rear panning, and center-channel level adjustment using the V-Pot.
4 Sends	Press to adjust bus and assignable effects send levels. Press the <b>Sends</b> button to scroll through the available busses and assignable effects chains, and then turn the V-Pot to adjust the send level.
5 Inserts	Press to adjust effects settings.

Press the button once to display **PL** in the Mackie Control Assignment display. The Mackie Control LCD displays the effects that are assigned to each track or bus. The following example shows a three-track project:

```
Aud1  Aud2  Aud3  Master
TrNsGt TrcCmp TrcEQ (None)
```

Turn the V-Pot to scroll through the effects, and press the V-Pot to edit the current effect. In editing mode, **PE** is displayed in the Assignment display. The following example shows the settings for the Noise Gate plug-in on track one:

```
ThrLvl AttTim RlsTim Bypass|Aud1  Track Noise Gate
-80.0  2.90  100.0  False| 1/1  *Noise gate 1
```

PE mode uses the following controls:

- **V-Pots 1-4:** Turn to edit the effect's parameters. For "switch" parameters such as Bypass, press the V-Pot to change the setting.
- **V-Pot 5:** Turn to scroll through an effect's property pages.
- **V-Pot 6:** Turn to choose from a plug-in's available presets. Press the V-Pot to choose a preset.
- **V-Pot 7:** Turn to edit the current effect for a different channel.
- **V-Pot 8:** Turn to choose other effects for the current channel.

Press the **Inserts** button again to view effects chains. **PS** is displayed in the Assignment display. The following example shows the effects chain on track one:

```
TrackNoisGate  Track EQ      TrackCmprs  |Aud1
| 1/2
```

PS mode uses the following controls:

- **V-Pots 1, 3, and 5:** Turn to choose other effects for the current channel. Press to edit the selected effect and enter PE mode.
- **V-Pots 2, 4, and 6:** After choosing an effect with V-Pot 1, 3, or 5, press V-Pot 2, 4, or 6 to add it to the channel.
- **V-Pot 7:** If a channel has multiple pages of effects in the chain, turn to display additional effects. In the previous example, **Aud 1 1/2** means that track one has two pages of effects.
- **V-Pot 8:** Turn to choose effects chains for other channels.

When **<No Insert>** is displayed above a V-Pot, you can turn the V-Pot to view effects that you can add to the chain. New effects are displayed with a \*. Press the next V-Pot (to the right) to add the effect.

Item	Description
6 Settings	<p data-bbox="532 149 1537 178">Press to adjust track or bus settings using the F1 through F6 buttons.</p> <ul data-bbox="532 189 1537 420" style="list-style-type: none"> <li data-bbox="532 189 1537 241">• <b>F1:</b> Hold the button and turn the V-Pot to change the automation recording mode for each track and bus track.</li> <li data-bbox="532 241 1537 273">• <b>F2:</b> Hold the button and turn the V-Pot to change the current panning mode.</li> <li data-bbox="532 273 1537 304">• <b>F3:</b> Not used.</li> <li data-bbox="532 304 1537 357">• <b>F4:</b> Hold the button and turn the V-Pot to change record input monitoring settings when you're using an ASIO audio device.</li> <li data-bbox="532 357 1537 420">• <b>F5:</b> When the <b>Pan</b> button is selected, press the <b>Settings</b> button and then hold F5 while pressing the V-Pot to change the bus or assignable effects output fader to Pre FX or Post FX.</li> </ul> <p data-bbox="532 430 1537 514">When the <b>Sends</b> button is selected, press the <b>Settings</b> button and hold F5 while pressing the V-Pot to change a track's bus or assignable effects send level to Pre Volume or Post Volume. Press the <b>Sends</b> button to scroll through the available bus and effects sends.</p> <ul data-bbox="532 514 1537 571" style="list-style-type: none"> <li data-bbox="532 514 1537 571">• <b>F6:</b> Press the <b>Settings</b> button and hold F6 while pressing the V-Pot on a channel to return the channel's settings to the track defaults.</li> </ul>

## Fader Banks buttons

The Fader Banks buttons control the behavior of the channel section controls.



Item	Description
1 Bank	Press the left or right arrow button to scroll the channels 8 units at a time. For example, if tracks 1-8 are currently displayed, pressing the right arrow will change to tracks 9-16.
2 Channel	Press the left or right arrow button to scroll the channels 1 unit at a time. For example, if tracks 1-8 are currently displayed, pressing the right arrow will change to tracks 2-9. Hold the <b>Option</b> button while pressing either <b>Channel</b> button to change track order. For example, if track two is selected and you press <b>Option+ &lt; Channel</b> , track two becomes track one. Conversely, if track one is selected and you press <b>Option + Channel &gt;</b> , track one becomes track two.
3 Flip	Press to exchange the behavior of the fader and V-Pot when allowed.

## Display buttons

The Display buttons control the behavior of the channel section controls.



Item	Description
1 Meters/ Values	When you're working with audio tracks or busses, press to display meters or numeric values. Even in Meters mode, numeric values are displayed when you edit a value. Hold the <b>Shift</b> button in the Modifiers section while pressing the <b>Meters/Values</b> button to toggle control of tracks, busses, or tracks and busses. <ul style="list-style-type: none"> <li>• Press once to show audio and MIDI tracks.</li> <li>• Press again to show audio tracks.</li> <li>• Press again to show MIDI tracks.</li> <li>• Press again to show busses.</li> <li>• Press again to show all tracks and busses.</li> </ul>
2 Time Fmt Zero	Press and hold to display the current time format. Turn V-Pot 8 while holding the button to change the format.

## Markers buttons

The Markers buttons control additional track and channel settings.



Item	Description
1 Marker 1/9 Automation Mode	Press to place the cursor at marker 1, or hold Shift and press to place the cursor at marker 9. When the <b>Settings</b> button is selected, hold the button and turn the V-Pot to change the automation recording mode for each track and bus track.
2 Marker 2/10 Pan Mode	Press to place the cursor at marker 2, or hold Shift and press to place the cursor at marker 10. When the <b>Settings</b> button is selected, hold the button and turn the V-Pot to change the current panning mode.
3 Marker 3	Press to place the cursor at marker 3.
4 Marker 4 Input Monitor	Press to place the cursor at marker 4. When the <b>Settings</b> button is selected, hold the button and turn the V-Pot to change record input monitoring settings when you're using an ASIO audio device.
5 Marker 5 Pre/Post	Press to place the cursor at marker 5. When the <b>Pan</b> button is selected, press the <b>Settings</b> button and then hold F5 while pressing the V-Pot to change the bus or assignable effects output fader to Pre FX or Post FX.  When the <b>Sends</b> button is selected, press the <b>Settings</b> button and hold F5 while pressing the V-Pot to change a track's bus or assignable effects send level to Pre Volume or Post Volume. Press the <b>Sends</b> button to scroll through the available bus and effects sends.
6 Marker 6 Default	Press to place the cursor at marker 6. Press the <b>Settings</b> button and hold F6 while pressing the V-Pot on a channel to return the channel's settings to the track defaults.
7 Marker 7	Press to place the cursor at marker 7.
8 Marker 8	Press to place the cursor at marker 8.

## Add New buttons

The Add New buttons add busses or tracks to your project.



Item	Description
1 Track	Press to add a new audio track.
2 Bus	Press to add an audio bus to your project.

## Windows buttons

The Windows buttons control the display of various ACID windows.



Item	Description
1 Mixer	Press to show the Mixer window. If the window is not docked, pressing the button shows/hides the window.
2 Video Preview	Press to show the Video Preview window. If the window is not docked, pressing the button shows/hides the window.
3 Plug-Ins	Press to show the Plug-In Manager window. If the window is not docked, pressing the button shows/hides the window.

## View buttons

The View buttons control the display of various sections of the ACID window.



Item	Description
1 Bus Tracks	Press to show or hide audio bus tracks in the ACID timeline. When the <b>Video</b> button is selected, press to show or hide the video bus track.
2 Dock Area	Press to show or hide the Window Docking Area at the bottom of the ACID window.
3 Track List	Press to show or hide the track list in the timeline.

## Modifiers buttons

The Modifiers buttons extend the functionality of other buttons on the Mackie Control.



Item	Description
1 Shift	Hold the <b>Shift</b> button while pressing a button labeled with inverse text to perform the shift function. For example, hold <b>Shift</b> while pressing the Undo/Redo button to reverse an undo action.
2 Option/Track Order	Hold the <b>Option/Track Order</b> button while pressing a button in the Settings, Add New, or Windows group for alternative functions. Hold the <b>Option/Track Order</b> button while pressing a the <b>Channel &lt;</b> or <b>Channel &gt;</b> button to change track order. Hold the <b>Option/Track Order</b> button while pressing F1 to F16 to perform custom functions you can define. <i>For more information, see <a href="#">Configuring or customizing control mappings</a> on page 4.</i>
3 Ctrl	Hold the <b>Ctrl</b> button while using a control for alternative functions.
4 Alt	Hold the <b>Alt</b> button while using a control for alternative functions.

## Audio/Video buttons

The Audio/Video buttons control various audio and video settings for your project.



Item	Description
1 Automation	Press to place the controls on the Mackie Control in automation mode. The controls in the channel section of the Mackie Control will affect the automation parameters on the track or bus if Automation Write (Touch) or Automation Write (Latch) mode is selected. When the button is not selected, the buttons control trim (static) values.
2 Bypass FX	Press to bypass/enable all audio effects.
3 Metronome	Press to turn the metronome on or off.
4 Surround	Press to toggle the project properties between stereo and 5.1 surround mode.
5 Downmix	Press to toggle the state of the <b>Downmix Output</b> button in the Mixer window.
6 Dim	Press to toggle the state of the <b>Dim Output</b> button in the Mixer window.

## Project buttons

The Project buttons perform various project-level commands.



Item	Description
1 Save	Press to save your project.
2 Undo/Redo	Press to reverse edit operations. Hold <b>Shift</b> while pressing the button to reverse an undo operation.
3 OK	Not used.
4 Cancel	Not used.

## Timeline buttons

The Timeline buttons perform various commands for the project timeline.

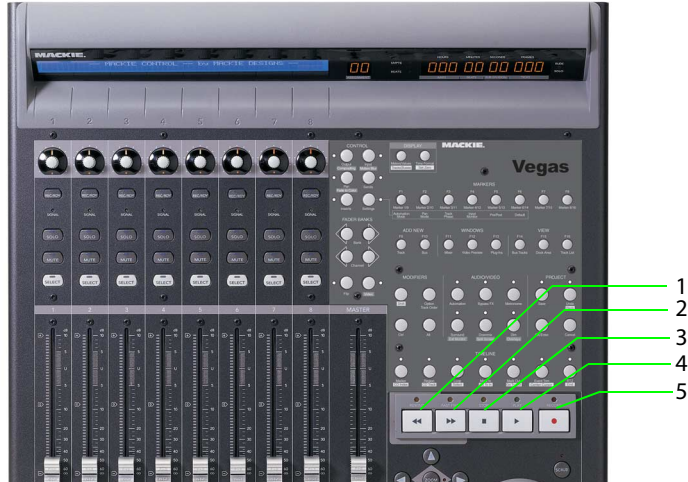


Item	Description
1 Marker	Press to place a marker at the cursor position. Hold the <b>Ctrl</b> button while pressing the button to remove a marker.
2 Region	Press to convert the current selection to a region. Hold the <b>Ctrl</b> button while pressing the button to remove a region.
3 Loop/ Select	Press to toggle looped playback mode. Hold the <b>Shift</b> button while pressing the <b>Loop/Select</b> button to create a time selection from the loop region.
4 Mark In/ Go to In	Press to set the beginning of the loop region at the cursor position. Hold the <b>Shift</b> button while pressing the <b>Mark In/Go to In</b> button to move the cursor to the beginning of the loop region.
5 Mark Out/ Go to Out	Press to set the end of the loop region at the cursor position. Hold the <b>Shift</b> button while pressing the <b>Mark Out/Go to Out</b> button to move the cursor to the end of the loop region.
6 Event Trim/ Center Cursor	Hold the <b>Shift</b> button while pressing the <b>Event Trim/Center Cursor</b> button to center the cursor in the timeline view.

Item	Description
7 RTZ/	Press to move the cursor to the beginning of the project.
End	Hold the <b>Shift</b> button while pressing the <b>RTZ/End</b> button to move the cursor to the end of the project.

## Transport buttons

The Transport buttons allow you to navigate the timeline and preview your project.



Item	Description
1 Rewind	Press and hold to move backward through the timeline at 20x speed.
2 Fast Forward	Press and hold to move forward through the timeline at 20x speed.
3 Stop	Press to stop playback and return the cursor to its position before playback started.
4 Play	Press to start playback. Press again to stop playback and leave the cursor at its current position.
5 Record	Press to start recording. Press again to stop recording and leave the cursor at its current position. Hold the <b>Shift</b> button while pressing the <b>Record</b> button to render the current selection to a new track.

## Arrow buttons

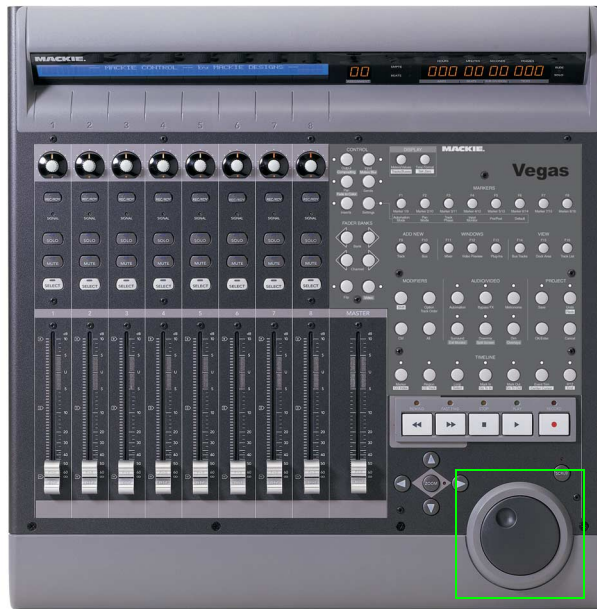
The arrow buttons allow you to navigate the timeline and preview your project.



Item	Description
1 Left/Right	<ul style="list-style-type: none"><li>• Press the left or right arrow button to move left or right 1/32 note.</li><li>• Hold <b>Ctrl</b> while pressing the left or right arrow button to go to the beginning or end of the project.</li><li>• Hold <b>Alt</b> while pressing the left or right arrow button to go to the beginning of the next or previous measure.</li></ul>
2 Up/Down	<ul style="list-style-type: none"><li>• Press to zoom in or out.</li></ul>

## Jog dial

The jog dial allows you to navigate the timeline and trim events.



### Navigating the timeline

When playback is paused and the **Scrub** button is not selected, the jog dial performs the following functions:

- Turn the dial clockwise or counterclockwise to navigate the timeline by 1/32 note.
- Hold **Alt** and turn the dial to go to the beginning of the next or previous measure.

### Scrubbing the timeline

During playback, turning the jog dial increases or decreases the playback rate.

When playback is paused and the **Scrub** button is selected, turning the jog dial scrubs the timeline.

